

Beam grip with ratchet

Indispensable aid for carpenters

Beam grip = less force required

The beam grip is an indispensable aid for carpenters. Whether you want to align a roof truss or carry out other carpentry work, the beam grip allows you to prestress timber quickly and easily.



Product advantages

- Drop forged hooks
- No risk of splitting while driving in
- High-quality lead screw
- Ergonomic rubber hand
- 320 mm ratchet length for optimum load transmission
- Double-sided handling thanks to clockwise/anticlockwise selector
- Span up to 600 mm
- Proven top quality



© Omika / fotobit.de

Beam grip

with ratchet, forged steel



Art. no.	Dimensions	Span	PU
954054	320 mm	up to 600 mm	2

Bracing strap tensioner

suitable for the beam grip with ratchet



Art. no.	PU
954055	Pieces



Transport anchor system

Consists of transport anchor and transport anchor screws

NEW
to our product range

The secure lifting system

Made of quality steel, this manual lifting attachment is used to lift all kinds of timber parts securely and easily. The transport anchors of the load group of up to 1.3 tonnes are expressly to be used only in conjunction with the Ø 11 x 160 mm Eurotec transport anchor screw tested in the ETA-11/0024 European Technical Approval.

The Ø 11 x 160 Eurotec transport anchor screw is only to be used once! It can be screwed into solid wood (softwood), laminated veneer lumber, glue-laminated timber, composite laminated board and composite laminated beam without pilot-drilling. Use in hardwoods is not permitted! The possible and/or approved assembly positions can be found in our operating instructions. We will be delighted to provide you with a copy of these.

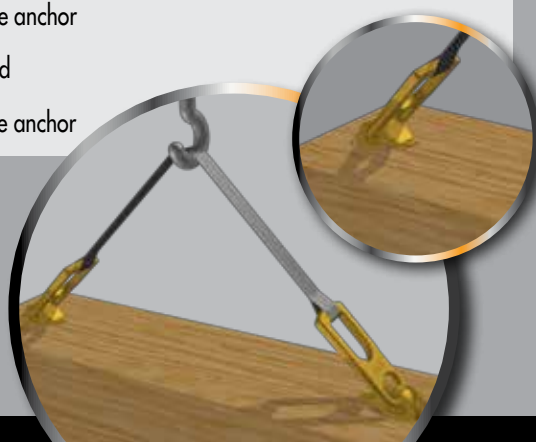


Please note

- Transport anchor screws must only be used once
- Read the operating instructions in detail before use
- Users are to be trained prior to the first commissioning
- The transport anchor is to be examined for damage before each use and discarded where appropriate
- The weights of the parts to be lifted must be known and permissible
- Only the lifting equipment stated in the operating instructions may be used

How the system works

- 1 Screw in the screw without pilot-drilling
- 2 Engage the anchor
- 3 Lift the load
- 4 Release the anchor



Transport anchor

High-quality steel

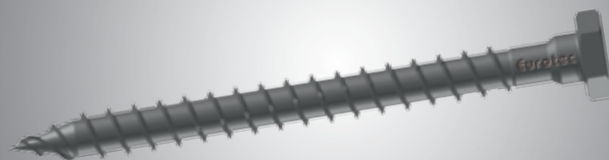


Art. no.	Dimensions (mm)*	Load group	PU**
110361	190 x 70	up to 1.3 tonnes	2

* Length x width
** Screws must be ordered separately (see below)

Transport anchor screw

High-quality steel, with AG tip



Art. no.	Dimensions (mm)	Head	PU
110360	11 x 160	SW17	20

• AG screw tip

Extraction-resistance values for the Ø 11 transport anchor screw According to ETA-11/0024 approval

Subject to	kg
axial tension	792
diagonal tension	368
diagonal tension with precise sinking of the coupling head	792

Wall support

Provides support during the installation of prefabricated walls

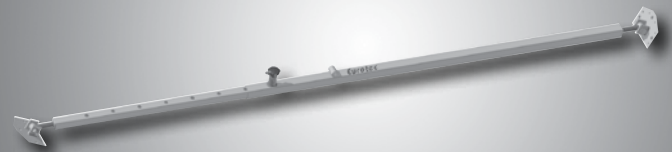


Makes the assembly of prefabricated walls significantly easier

Thanks to their high load-bearing capacity, the Eurotec wall supports can support walls until they are fully assembled without any problems and therefore take the place of many helping hands. A locking pin system allows especially quick and easy adjustment of the wall support's height. Subsequent fine adjustment is also possible using threaded rods.

Wall support

Galvanised



Art. no.	length (mm)	Angle of inclination	PU
803572	1600-3000	max. 45°	pieces



Advantages

- Universal application
- Easy operation
- Fast assembly
- Almost no force needed from the user
- Very secure and sturdy
- Saves time

NEW
to our product range

Japanese saw, folding carpenter's ruler

The tools every craftsman needs

Low force exertion thanks to thin saw blade

A Japanese saw is a collapsible handsaw and the counterpart of the precision saws that are common in Europe. The key difference is that Japanese saws only cut on the pull stroke. The especially thin saw blade is a great advantage, along with the associated fine cut, which is achieved with low force exertion. Thanks to the extremely sharp trapezoidal toothing, the cut timber no longer requires finishing. This saves time and offers attractive results.



Advantages

- Fine cuts
- Low force exertion
- Little material wear
- Saves time
- Easy to handle
- Flexible saw blade

Please note

- The cutting surfaces are very sharp
- Practise handling before first use to avoid injuries

Japanese saws

Collapsible



Art. no.	Length of saw blade (mm)*	Total length (mm)**	PU
800400	240 x 35 x 1	530/200	pieces

* Length x width x thickness. ** Total length / handle length

- Application areas: carpentry crafts, tree care, pruning of trees etc.



NEW
to our product range

© contrastwerkstatt / fotolia.de

Folding carpenter's ruler

Black



Art. no.	Dimensions	PU
944502	Length: 2 m	pieces